



THE WINORA F.U.B. IT CARRIES MORE.



WINORA

WINORA

FAMILY UTILITY BIKE

**F.U.B.
#ITCARRIESMORE –**

THE NEW WINORA E-CARGO BIKE

THE WINORA F.U.B.

IT CARRIES MORE.





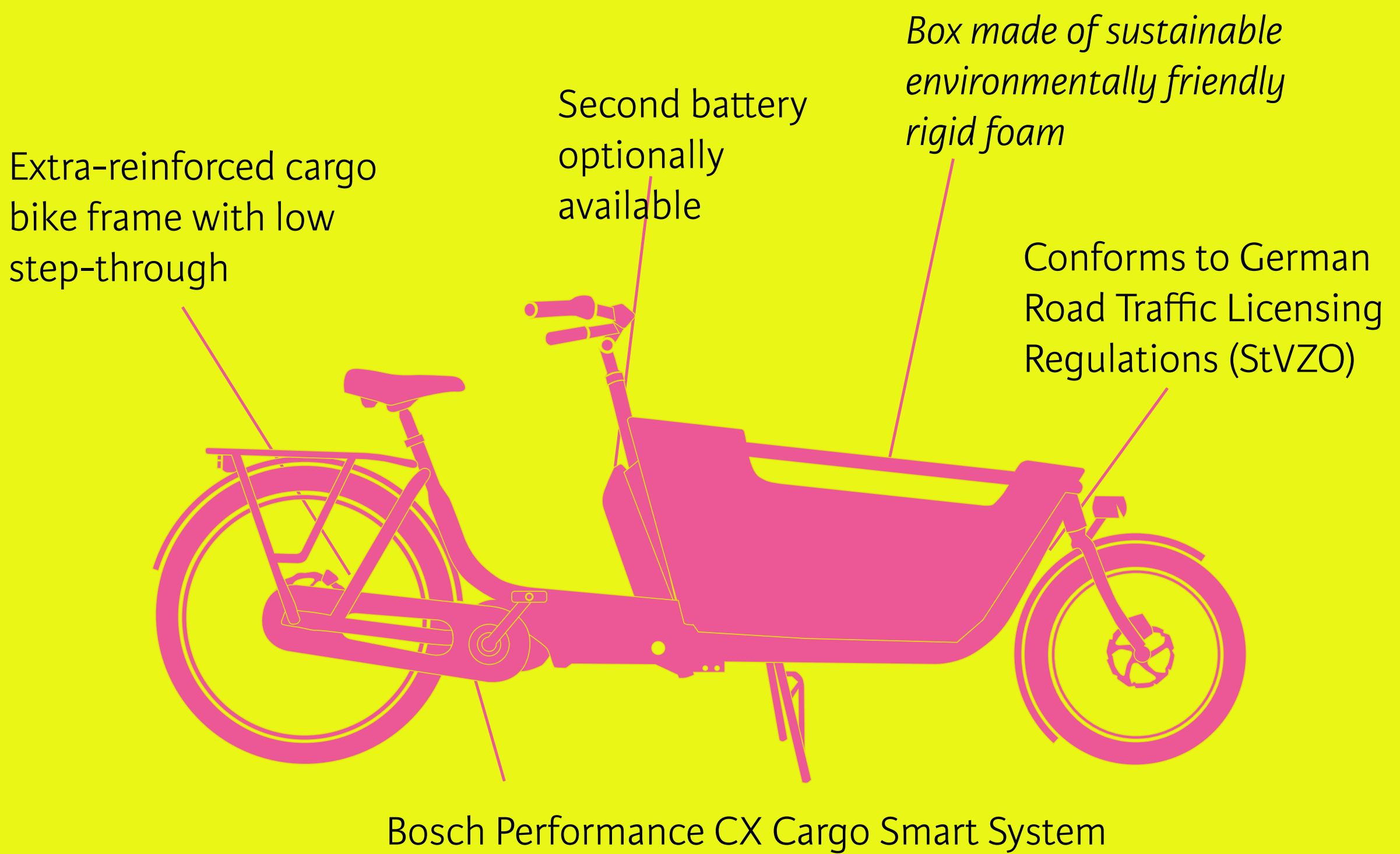
#ITCARRIES
MORE

#ITCARRIES MORE

#ITCARRIESMORE - BECAUSE THE BEST DAYS ARE FULL OF GREAT MEMORIES: TAKE THEM ALL HOME WITH YOU. WITH THE NEW WINORA E-CARGO BIKE: THE F.U.B.

Do you want to go on new adventures with your family, discover new places and make lots of memories? The F.U.B is WINORA's new electric cargo bike that you can rely on and that has the most exciting adventures in store for you and your kids every day - wherever the adventure takes you.

The F.U.B. is the newest member of our portfolio. During the development of this electric cargo bike, special emphasis was placed on safety, comfort and matching accessories, so that your new cargo bike can fulfill all your needs.



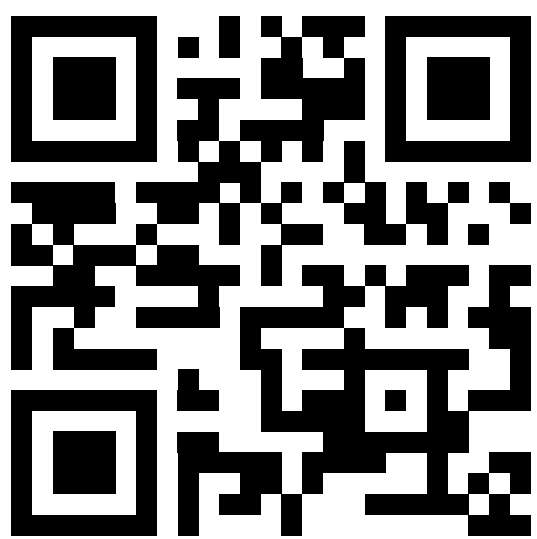
**#ITCARRIESMORE -
GOODBYE SUV.HELLO F.U.B.!**

Leave the car at home and cruise relaxed through the city with your whole family. The new Winora e-cargo bike F.U.B. makes it possible! Our new WINORA e-cargo bike offers enough power and space to transport all the things that are important in your life.

With a load capacity of **up to 80 kg in the cargo box**, there is enough space in the new two-wheeler for two children as well as additional luggage. The two wheels make the F.U.B. especially maneuverable, so you can take every turn with confidence and master narrow city streets.

The WINORA Three-Wheeler can even carry a little more weight: with a payload of **up to 100 kg in the cargo box**, there is room for up to four children and additional luggage. The three wheels make this bike extra stable for many safe kilometers.

**SCAN ME -
VIDEOGUIDES OF
OUR BIKES!**



**#ITCARRIES
MORE**





#CARRYITBETTER

#CARRYITBETTER – WITH THE CLEVER RAIL SYSTEM

It couldn't be more practical. Because the F.U.B. is a versatile cargo bike. The rail system in the cargo box makes it possible to attach various accessories securely. For example, you can attach a Maxi-Cosi™ in the matching holder in no time at all and replace it later with a seat.



#CARRYITCOMFORTABLE

Seat height easily adjustable with quick release

The F.U.B. is for the whole family. That's why the seat post features a quick release that allows you to adjust the saddle to a comfortable riding position quickly and easily, without tools.

#CARRYITSAFE

Stop quickly and safely with hydraulic disc brakes

Hydraulic disc brakes provide a perfect dosage of braking power and bring you to a stop quickly and safely. The great advantage of disc brakes is that they work optimally even in wet weather.

#CARRYITWITHHELP

Powerful support from the Bosch Performance Cargo Line motor

Master every ride. The powerful Bosch Performance Cargo Line mid-motor supports you whenever you need it – and with the display you always have an overview of all your riding data. The placement of the motor in the middle of the bike ensures optimal weight distribution and a wonderful riding experience.

SECURE ATTACHEMENT OF CHILD SEATS OR LUGGAGE BAGS WITH MIK HD

The **extra strong MIK HD carrier** ensures that child seats, luggage bags and baskets are securely attached. At the same time, it allows you to quickly and easily switch between different MIK accessories, which simply snap into place.

SAFE ON THE ROAD WITH NEW LIGHTING

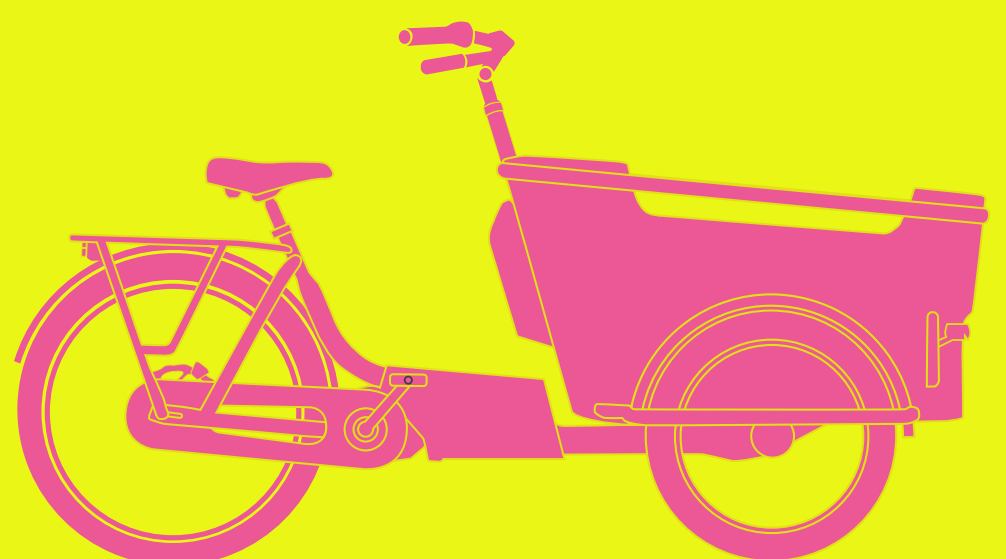
Cycling in the dark is now as safe as during the day, because the WINORA F.U.B. is equipped with a **Herrmans H-Black MR8 E 50 lux headlight** and an **AXA Blueline rear light**, so you can be seen even better by following traffic.



GO ON AN ADVENTURE WITH THE WINORA F.U.B.

The advantages at a glance:

- The rail system makes it easy to switch between the F.U.B.'s accessories so your cargo bike grows with your family
- The Bosch Performance Cargo line mid-motor gives you all the power you need for your rides
- Hydraulic disc brakes ensure that you can brake and stop quickly and safely
- Easy seat height adjustment with quick release
- Secure attachment of child seats or bags to the MIK HD rear rack
- Other accessories like a rain tent or bike cover complete your cargo bike





CHILDREN CAN GET ON
AND OFF THE CARGO
BIKE INDEPENDENTLY

#CARRYIT WITHOUT ACCESSORIES

IT CARRIES MORE.



**BOX COVER
CAR SEAT
CUSHION
RAIN TENT
AND MORE.**

F.U.B. 2 & 3 COMPATIBLE

BOX COVER

Protect your WINORA cargo bike from rain, leaves and anything else that might fall inside. This cover attaches easily and is the perfect solution when it rains and the kids need to get to school or the grocery shopping has to be done.

- Protects the box in the rain
- Partial roll-up allows for use with one or two children in the box



F.U.B. 2 & 3 COMPATIBLE

RAIN TENT

The rain tent has windows on all sides so that your kids can look outside even in wind and rain during the ride. The rain tent can also be used as a sun tent by opening the windows with the YKK zipper.

- Made of extra strong PVC
- Equipped with special window film for optimal transparency
- Windows are easy to open and close
- Easy to assemble and disassemble

F.U.B. 2 & 3 COMPATIBLE

CARGO COVER

The cover is the ideal accessory to keep your cargo bike clean and dry.

- The material is waterproof and breathable with sealed seams
- Easy to store thanks to the flexible material
- Practical fasteners to close the cover tightly



F.U.B. 2 & 3 COMPATIBLE

F.U.B. CUSHION SEATS

The soft cargo bike cushions create maximum comfort for kids. The seat and back cushions are interconnected, so two cushions fit side by side on one bench.

#CARRYIT WITH OUR ACCESSORIES

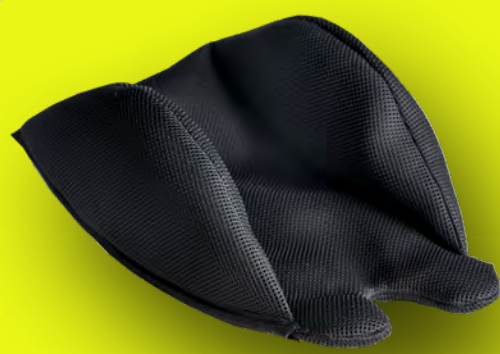
SUITABLE ACCESSORIES MAKE YOUR NEW WINORA CARGO BIKE READY FOR EVERY ADVENTURE

The right accessories make it comfortable. Kids, fluffy passengers such as dogs and cuddly teddy bears, or material luggage stay dry thanks to the rain tent or rain cover. And with the installed rail system it becomes #safe and #comfortable! Whether through the secure attachment at the bottom of the cargo box, rail attachment or Maxi-Cosi™ carrier.

#CARRYIT WITHOUR ACCESSORIES

**WITH THE RIGHT
ACCESSORIES, THE WINORA
F.U.B. GROWS WITH YOUR
FAMILY.**

**ASK FOR ACCESSORIES AT
YOUR LOCAL AUTHORIZED
WINORA DEALER**



F.U.B. 2 & 3 COMPATIBLE

BODY AND HEAD SUPPORT

The Melia body and head support fills the space in the baby seat, giving baby extra stability while riding in the F.U.B.. With this addition, you can take your baby in the cargo bike from the age of 3 months.

- Body support for extra stability
- The material is breathable and water repellent
- Immediately removable



F.U.B. 2 & 3 COMPATIBLE

TODDLER SEAT

The Melia toddler seat with a three-point harness is the ideal solution for transporting children between 8 and 18 months. Your child sits well protected and thanks to the back support also in a straight position

- Water repellent, shock absorbing material with all-weather fabric cover
- Safe and stable seating position.

F.U.B. 2 & 3 COMPATIBLE

BABY SEAT

The Melia baby seat is ideal if you want to take your baby from 3 to 9 months in the cargo bike. Thanks to the extra soft cushion, the little ones lie wonderfully at ease in the bicycle trailer or cargo bike

- The material is breathable and water repellent
- Particularly safe and comfortable thanks to raised edge



F.U.B. 3 COMPATIBLE

SECOND SEAT BENCH

In the WINORA F.U.B. 3-Wheeler you can mount an additional seat bench, so you can take two additional children in your new cargo bike.

- Offers space for two additional children



F.U.B. 2 & 3 COMPATIBLE

MAXI-COSI™ HOLDER

With the Steco car seat carrier you can take your baby from the age of 3 months (if the neck is strong enough) safely and easily in the cargo bike.

- Suitable for many Maxi-Cosi™ types
- Watch your baby while cycling
- Good suspension



F.U.B. 2W LOW

NAVY MATT



500 WH	BOSCH	20 / 26"	STVZO	200 KG
--------	-------	----------	-------	--------



Motor	Bosch Performance CX Cargo Line, 85Nm, 25km/h
Display	Bosch Purion
Akku / Battery	Bosch PowerPack 500Wh
Ladegerät / Charger	Bosch Standard Charger 4A
Rahmen / Frame	steel, disc brake Post Mount
Gabel / Fork	Unicrown
Schaltwerk / Rear derailleur	Shimano Nexus, 5-speed
Schalthebel / Shift lever	Shimano Nexus, twist shifter
Zahnkranz (hinten) / Sprocket	Shimano Einzelblatt, 30 teeth
Kette / Chain	KMC E1 EPT
Bremshebel / Brake lever	Tektro HD-T520, aluminium
Bremse vorne / Brake front	Magura CT, aluminium, 160mm
Bremse hinten / Brake rear	Magura CT, aluminium, 160mm
Reifen vorne / Tyres front	Schwalbe Pick-Up, 55-406, puncture protection, reflex
Reifen hinten / Tyres rear	Schwalbe Pick-Up, 55-559, puncture protection, reflex
Felgen vorne / Rims front	Ryde Andra 40, double-walled rim, aluminium
Felgen hinten / Rims rear	Ryde Andra 40, double-walled rim, aluminium

Hinterradnabe / Rear wheel hub	Shimano Nexus
Speichen / Spokes	black, black
Lenker / Handlebar	Humpert Stuttgart 610mm
Griffe / Grips	Herrmans Click Ergo - lock on grips
Vorbau / Stem	Alu, winkelverstellbar, inner clamping, Bar bore: 31.8mm, 0°
Steuersatz / Headset	VP MH305C
Sattel / Saddle	Selle Royal Orbis
Sattelstütze / Seat post	patent, 31.6mm, aluminium
Pedale / Pedals	Marwi SP-827 plastic, non-slip, mit Reflektor
Scheinwerfer / Headlight	Herrmans H-Black MR8 E, 50 lux
Rücklicht / Rear light	AXA Blueline
Dynamo / Dynamo	via system battery
Gepäckträger / Carrier	Winora Systemgepäckträger, MIK
Schutzbleche / Fenders	Curana Apollo 65, aluminium
Ständer / Stand	Zweibeinständer
Zul. Gesamtgewicht / Permitted total weight	200kg
Fahrradtyp / Bicycle type	cargo bike

F.U.B. 2W Low 20"/26"

20"/26" 52 44700350 navy matt



F.U.B. 3W LOW

CONCRETE MATT



500 WH	BOSCH	20 / 26"	STVZO	250 KG
--------	-------	----------	-------	--------



Motor	Bosch Performance CX Cargo Line, 85Nm, 25km/h
Display	Bosch Purion
Akku / Battery	Bosch PowerPack 500Wh
Ladegerät / Charger	Bosch Standard Charger 4A
Rahmen / Frame	steel, disc brake Post Mount
Gabel / Fork	Unicrown
Schaltwerk / Rear derailleur	Shimano Nexus, 5-speed
Schalthebel / Shift lever	Shimano Nexus, twist shifter
Zahnkranz (hinten) / Sprocket	Shimano Einzelblatt, 30 teeth
Kette / Chain	KMC E1 EPT
Bremshebel / Brake lever	Zoom HD-870-T-2
Bremse vorne / Brake front	Zoom HD-870-T-2, 160mm
Bremse hinten / Brake rear	Zoom HD-870-T-2, 160mm
Reifen vorne / Tyres front	Schwalbe Pick-Up, 55-406, puncture protection, reflex
Reifen hinten / Tyres rear	Schwalbe Pick-Up, 55-559, puncture protection, reflex
Felgen vorne / Rims front	Ryde Andra 40, double-walled rim, aluminium

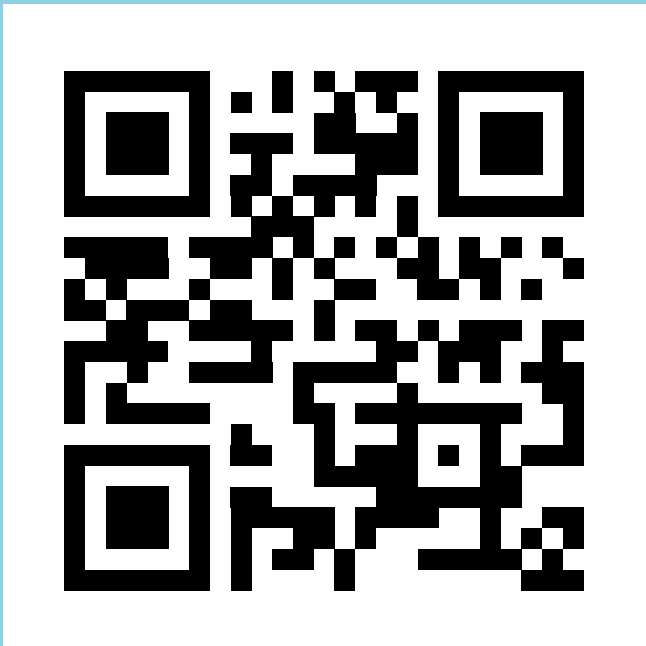
Felgen hinten / Rims rear	Ryde Andra 40, double-walled rim, aluminium
Hinterradnabe / Rear wheel hub	Shimano Nexus
Speichen / Spokes	black, black
Lenker / Handlebar	Humpert Mooncruiser
Griffe / Grips	Westphal
Vorbau / Stem	Alu, winkelverstellbar, inner clamping, Bar bore: 31.8mm, Ø°
Steuersatz / Headset	VP MH305C
Sattel / Saddle	Selle Royal Orbis
Sattelstütze / Seat post	patent, 31.6mm, aluminium
Pedale / Pedals	Marwi SP-827 plastic, non-slip, mit Reflektor
Scheinwerfer / Headlight	Herrmans H-Black MR8 E, 50 lux
Rücklicht / Rear light	AXA Blueline
Dynamo / Dynamo	via system battery
Gepäckträger / Carrier	Winora Systemgepäckträger, MIK
Schutzbleche / Fenders	Curana Apollo 65, aluminium
Zul. Gesamtgewicht / Permitted total weight	250kg
Fahrradtyp / Bicycle type	cargo bike

F.U.B. 3W Low 20"/26"

20"/26"	52	44704350	concrete matt
---------	----	----------	---------------



#ITCARRIES MORE



**SCAN ME -
VIDEOGUIDES OF
OUR BIKES!**

IMPRINT

We are not liable for errors, changes or misprints.

Images might not represent the original.

WINORA-STAIGER GmbH is a member of ACCELL GROUP.

© WINORA-STAIGER GmbH, Sennfeld, Deutschland 2023

FOR MORE DETAILED INFORMATION AND OTHER NEWS, PLEASE VISIT OUR WEBSITE AT WWW.WINORA.COM.





#ITCARRIESMORE



WINORA BIKES

URBAN | COMFORT | TREKKING | KIDS